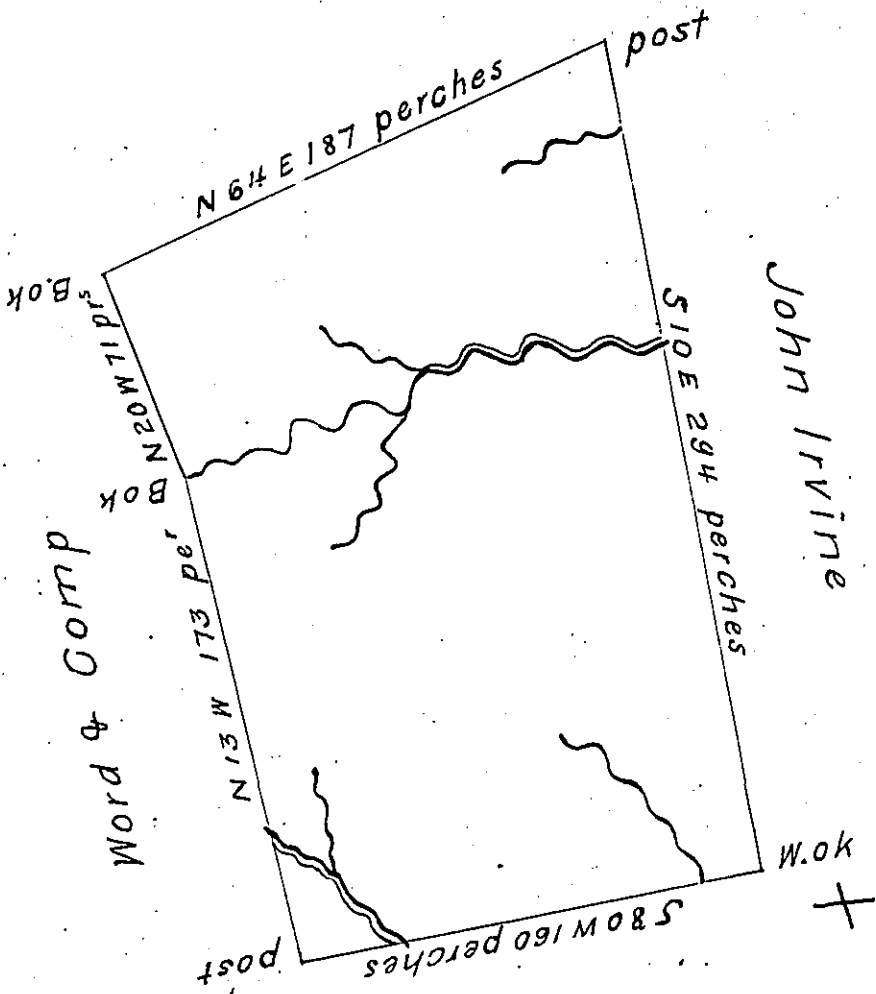


(See Pg. 5)



John Clifford

The Above is a Draught of a Tract of Land Sittu on Elk horn Run Galled Gooseberry Containing two hundred & sixty seven Acres & fourty nine perches with the Usual ^{Allowance} Surveyed April the 2^d 1785 In pursuance of a Warrant Granted to Nicholas Bousman & Dated at Philadelphia February the 15th 1785

David Redick D.S.

John Lukens Esq^r. S.G.

IN TESTIMONY that the above is a copy of the original remaining on file in the Department of Internal Affairs of Pennsylvania, made conformably to an Act of Assembly approved the 16th day of February, 1833, I have hereunto set my Hand and caused the Seal of said Department to be affixed at Harrisburg, this Eleventh day of March 1904

James D. Brown
Secretary of Internal Affairs.